

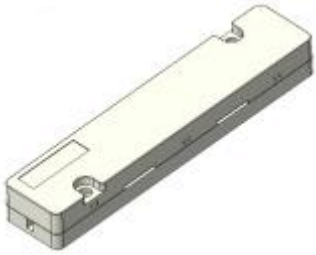
FTTH drop cable protection box



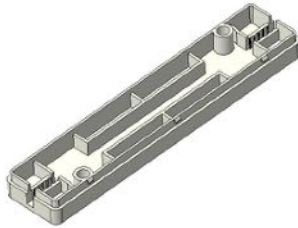
DPFBMINI



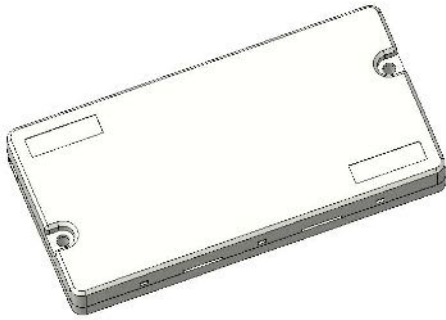
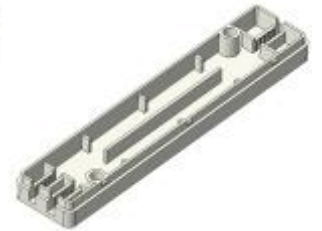
DPFBMINIA



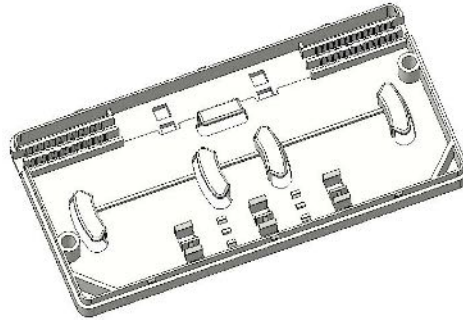
DPFB01



DPFB02



DPFB03



Model	Dimension L*W*H (mm)	Material	Adapter port	Splicing capacity	Cable port	Application
DPFBMINI	160x48x16	ABS	1 SC simplex	1 fiber	1 in 1 out	Outdoor wall mounted; Can load SC fast connector or mechanical splicer
DPFBMINIA	180x48.2x17	ABS	1 SC simplex	1 fiber	1 in 1 out	
DPFB01	84.4x17.6x10.8	ABS	/	1 fiber	1 in 1 out	Indoor wall mounted
DPFB02	84.4x17.6x10.8	ABS	/	2 fibers	1 in 2 out	
DPFB03	95x48x11.4	ABS	/	4 fibers	2 in 2 out	